

THE THREAT IS

CLOSER THAN YOU THINK

Elanco

FEAR FREE
HAPPY
HOMES
Helping pets live happy, healthy, full lives

Lyme

Wildlife that contribute to the spread of Lyme disease:



How your pet is exposed to Lyme disease:



Prevalence:

- Prevalence of Lyme disease depends on locale
- It can be as high as 16 percent in Connecticut and is expanding geographically
- Your veterinarian will assess your dog's risk for contracting Lyme disease by evaluating where you live, your dog's lifestyle, and his overall health

Symptoms & Diagnosis:

- Dogs exposed to Lyme may experience fever, appetite loss, lameness, and swollen joints
- Lyme disease is diagnosed through a blood test at your veterinarian's office

Prevention:

Using tick prevention and checking your dog regularly for ticks are important ways to help prevent Lyme disease. You may want to ask your veterinarian about an annual Lyme disease vaccination for your dog if:

- You live or travel to areas where Lyme disease is prevalent
- You have found ticks on your dog, yourself, or other family members
- You go for walks in green spaces or go hunting or camping in the woods
- Your dog frequents areas where deer graze

In areas where both Lyme and Leptospirosis are risks to dogs, combination vaccines are available, meaning your dog has fewer needle sticks. To learn more on how to check your pets for ticks, visit www.fearfreehappyhomes.com/ticks.

THE THREAT IS

CLOSER THAN YOU THINK



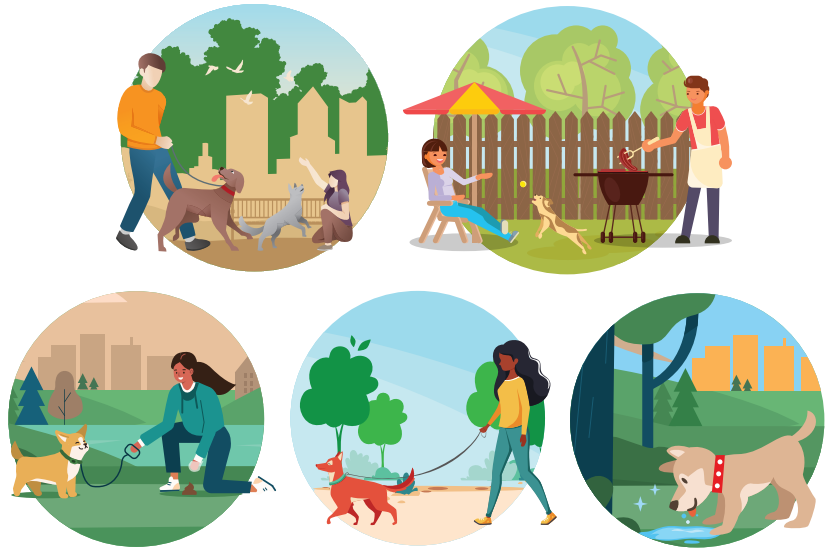
**FEAR FREE
HAPPY
HOMES**
Helping pets live happy, healthy, full lives

Leptospirosis

Common wildlife that carry Leptospirosis:



How your pet is exposed to Leptospirosis:



Prevalence:

Unless they live in a true desert environment, which doesn't include places such as Las Vegas, Phoenix, or Palm Springs, any dog can be at risk even if he rarely goes outdoors. Leptospirosis can be spread to dogs through:

- Rats in homes
- Drinking from communal water sources
- Grass or other areas contaminated by urine from carrier animals

Symptoms & Diagnosis:

- Dogs exposed to Leptospirosis may experience fever, weakness, renal failure and death
- Leptospirosis is diagnosed through a blood test at your veterinarian's office

Prevention:

- Highly purified ½ mL ULTRA vaccines are available for both Lyme disease and Leptospirosis
- They are designed to provide safe, effective protection and a more comfortable vaccine experience

If you're a fan of Fear Free techniques, you (and your dog) will appreciate a reduced-volume vaccine, which is designed to reduce discomfort and decrease the time it takes to administer the vaccination.