

Blood Collection Tube

For veterinary use

Intended Use

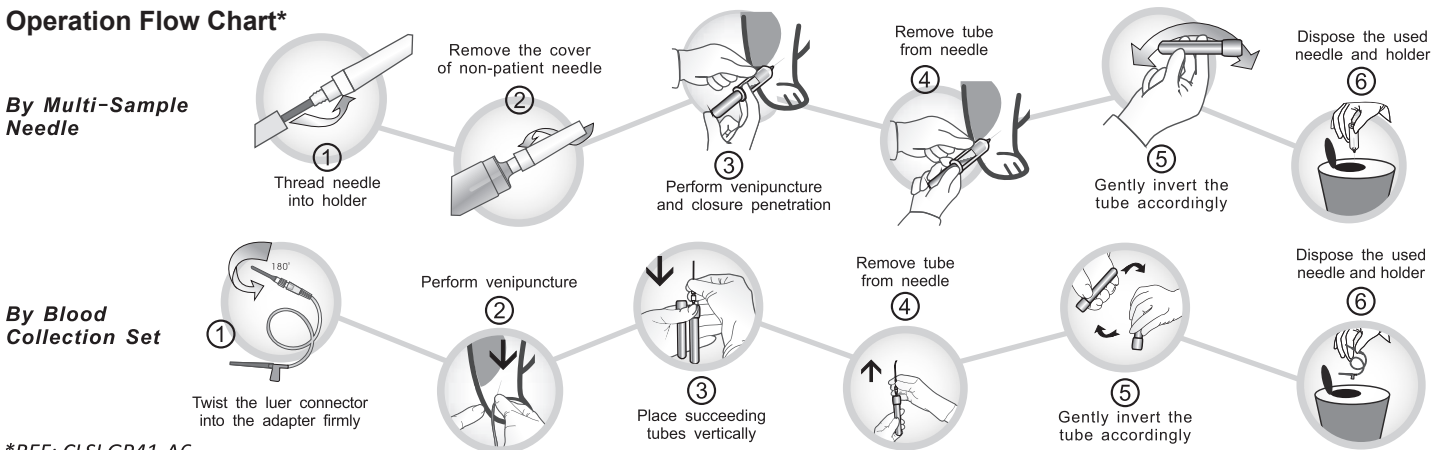
Covetrus® Blood Collection Tubes, needles, holders, and tourniquets are used together as a system for the collection of venous blood. Covetrus Blood Collection Tubes are used to collect, transport, and process blood for testing serum, plasma, or whole blood in the clinical laboratory.

Order of Draw*

Covetrus Blood Collection Tube	Color	Additive	Test Items	Inversions
Blood Culture Bottle / No Additive Tube as Discard Tube	/	/	/	0
Citrate Tube (9NC)	Blue	Sodium Citrate 0.129mol/L(3.8%) 0.109mol/L(3.2%)	Coagulation Determinations on Plasma Specimens	3~5
ESR Tube (4NC)	Black	Sodium Citrate 0.129mol/L(3.8%) 0.109mol/L(3.2%)	Erythrocyte Sedimentation Rate (ESR)	3~5
No Additive Tube	Red	/	/	0
Clot Activator Tube	Red	Clot Activator	Serum Determinations in Clinical Chemistry	5~8
Gel and Clot Activator Tube	Gold	Gel and Clot Activator	Biochemistry Test	5~8
Heparin Tube	Green	Lithium Heparin Sodium Heparin	Plasma Determinations in Clinical Chemistry and Hemorheology	5~8
Gel and Heparin Tube	Green	Gel and Lithium Heparin Gel and Sodium Heparin	Plasma Determinations in Clinical Chemistry	5~8
Gel and EDTA.K2 Tube	Lavender	Gel and EDTA.K2	Plasma Preparation for Molecular Diagnostic and Virus Load Testing	5~8
EDTA Tube	Lavender	EDTA.K2 EDTA.K3	Whole Blood Hematology Determinations	Spray: 3~5 Spray Dried: 5~8
Glucose Tube	Grey	Sodium Fluoride/EDTA Sodium Fluoride/Oxalate	Glucose Determinations	5~8

Immediately after drawing blood with Covetrus Blood Collection Tubes, it is recommended to mix thoroughly. Insufficient mixing might result in inaccurate test results and the need to re-draw.

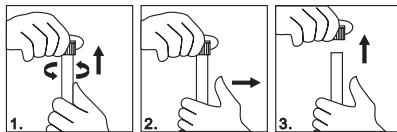
Operation Flow Chart*



*REF: CLSI GP41-A6

Removal of Safety Cap

1. Grasp the Covetrus Blood Collection Tube with one hand. Twist the safety cap while pushing up with the other hand **ONLY UNTIL THE TUBE STOPPER IS LOOSENED.**

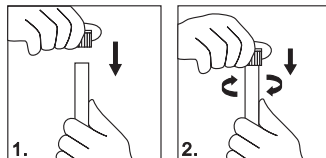


2. Move thumb away before lifting safety cap. **DO NOT** use thumb to push safety cap off tube.

3. Lift safety cap off tube. In the event of the plastic shield separating from the rubber stopper, carefully remove rubber stopper from tube.

Reinsertion of Safety Cap

1. Replace safety cap over tube.
2. Twist and push down until stopper is fully resealed. Complete reinsertion is necessary for the safety cap to remain securely on the tube during handling.



Symbol and Mark Key

Do not re-use	Caution	Fragile, Handle with care
Use-by date	Temperature limit	Keep dry
Batch code	Prescription only	Keep away from sunlight
Sterile	Date of manufacture	Stacking limit by number
This way up	Consult instructions for use	

Distributed by: Covetrus® North America
400 Metro Place North, Dublin, OH 43017
covetrus.com

AH-BloodCollectionTube-02
REV: 0623
Date of issue: 2023-04-23

© 2023 Covetrus, Inc. All rights reserved. Do not copy without consent.

Storage

Store the tubes at 39-77°F (4-25°C) unless there is other notice on the package or label. EDTA or clot activator spray-coated additives may have a brownish appearance; this does not affect the performance of the EDTA additive or clot activator. **Do not use tubes after the expiration date.** Tubes expire on the last day of the month and year indicated.

Barrier Information

Please set refrigerated centrifuges at temperatures between 59-77°F (15-25°C), and the yield of serum or plasma is ideal.

Clotting Instructions

Minimum Clotting Time Recommendations (Room Temperature)	
Product	Time (min)
No Additive Tubes (PET/Glass)	90/60
Clot Activator Tubes	30
Gel and Clot Activator Tubes	30

Centrifugation Reference

Centrifugation RCF and Time Recommendations		
Product	RCF (g)	Time (min)
No Additive Tubes	1500-2200	10
Clot Activator Tubes	1500-2200	10
Gel and Clot Activator Tubes	1800-2200	10
Plasma Tubes	1300-1800	10
Plasma Tubes with Gel	1500-1800	10
Citrate Tubes (9NC)	1500-2000	10

Cautions and Warnings

Always use appropriate centrifuge rotors or inserts, which should be of the size specific to the tubes used. Make sure the rotor is installed properly, and the rotor load is balanced. The above information about "Clotting Instructions" and "Centrifugation Reference" is for reference only. It is recommended to verify the condition before veterinary use.