

Blood Collection Tube

For veterinary use

Intended Use

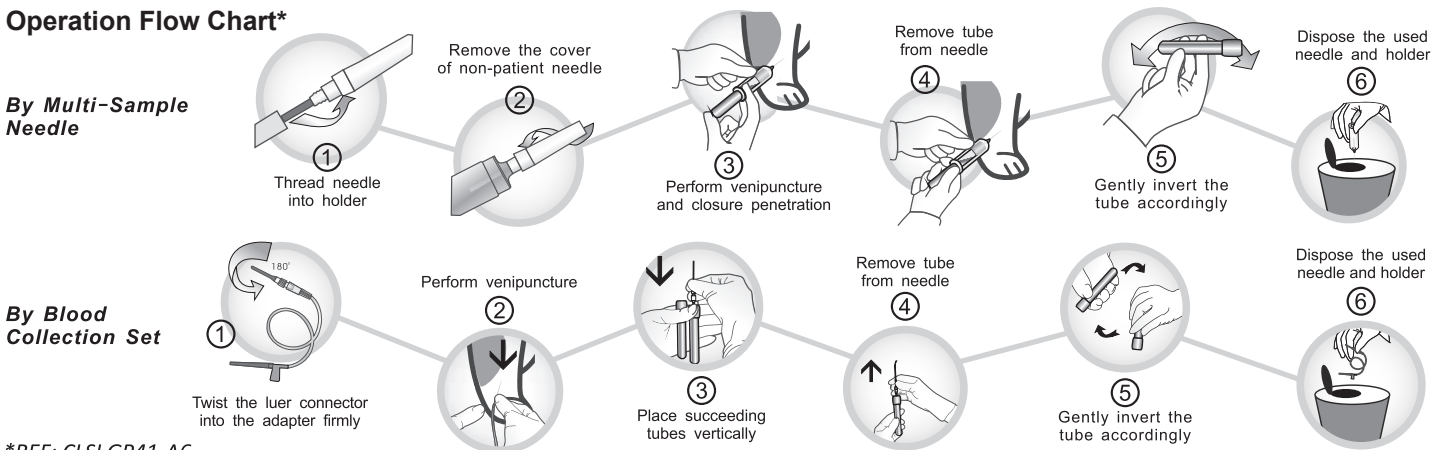
Covetrus® Blood Collection Tubes, needles, holders, and tourniquets are used together as a system for the collection of venous blood. Covetrus Blood Collection Tubes are used to collect, transport, and process blood for testing serum, plasma, or whole blood in the clinical laboratory.

Order of Draw*

| Covetrus Blood Collection Tube | Color | Additive | Test Items | Inversions |
|--|----------|---|---|--------------------------------|
| Blood Culture Bottle / No Additive Tube as Discard Tube | / | / | / | 0 |
| Citrate Tube (9NC) | Blue | Sodium Citrate 0.129mol/L(3.8%) 0.109mol/L(3.2%) | Coagulation Determinations on Plasma Specimens | 3~5 |
| ESR Tube (4NC) | Black | Sodium Citrate 0.129mol/L(3.8%) 0.109mol/L(3.2%) | Erythrocyte Sedimentation Rate (ESR) | 3~5 |
| No Additive Tube | Red | / | / | 0 |
| Clot Activator Tube | Red | Clot Activator | Serum Determinations in Clinical Chemistry | 5~8 |
| Gel and Clot Activator Tube | Gold | Gel and Clot Activator | Biochemistry Test | 5~8 |
| Heparin Tube | Green | Lithium Heparin Sodium Heparin | Plasma Determinations in Clinical Chemistry and Hemorheology | 5~8 |
| Gel and Heparin Tube | Green | Gel and Lithium Heparin Gel and Sodium Heparin | Plasma Determinations in Clinical Chemistry | 5~8 |
| Gel and EDTA.K2 Tube | Lavender | Gel and EDTA.K2 | Plasma Preparation for Molecular Diagnostic and Virus Load Testing | 5~8 |
| EDTA Tube | Lavender | EDTA.K2 EDTA.K3 | Whole Blood Hematology Determinations | Spray: 3~5 Spray Dried: 5~8 |
| Glucose Tube | Grey | Sodium Fluoride/EDTA Sodium Fluoride/Oxalate | Glucose Determinations | 5~8 |

Immediately after drawing blood with Covetrus Blood Collection Tubes, it is recommended to mix thoroughly. Insufficient mixing might result in inaccurate test results and the need to re-draw.

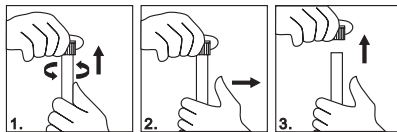
Operation Flow Chart*



*REF: CLSI GP41-A6

Removal of Safety Cap

1. Grasp the Covetrus Blood Collection Tube with one hand. Twist the safety cap while pushing up with the other hand **ONLY UNTIL THE TUBE STOPPER IS LOOSENED.**



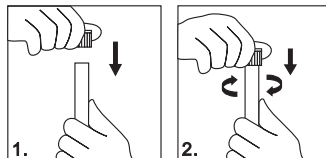
2. Move thumb away before lifting safety cap. **DO NOT** use thumb to push safety cap off tube.

3. Lift safety cap off tube. In the event of the plastic shield separating from the rubber stopper, carefully remove rubber stopper from tube.

Reinsertion of Safety Cap

1. Replace safety cap over tube.

2. Twist and push down until stopper is fully resealed. Complete reinsertion is necessary for the safety cap to remain securely on the tube during handling.



Symbol and Mark Key

| | | |
|---------------|------------------------------|---------------------------|
| Do not re-use | Caution | Fragile, Handle with care |
| Use-by date | Temperature limit | Keep dry |
| Batch code | Prescription only | Keep away from sunlight |
| Sterile | Date of manufacture | Stacking limit by number |
| This way up | Consult instructions for use | |

Distributed by: Covetrus® North America
400 Metro Place North, Dublin, OH 43017
covetrus.com

AH-BloodCollectionTube-02
REV: 0623
Date of issue: 2023-04-23

© 2023 Covetrus, Inc. All rights reserved. Do not copy without consent.

Storage

Store the tubes at 39-77°F (4-25°C) unless there is other notice on the package or label. EDTA or clot activator spray-coated additives may have a brownish appearance; this does not affect the performance of the EDTA additive or clot activator. **Do not use tubes after the expiration date.** Tubes expire on the last day of the month and year indicated.

Barrier Information

Please set refrigerated centrifuges at temperatures between 59-77°F (15-25°C), and the yield of serum or plasma is ideal.

Clotting Instructions

| Minimum Clotting Time Recommendations (Room Temperature) | |
|--|------------|
| Product | Time (min) |
| No Additive Tubes (PET/Glass) | 90/60 |
| Clot Activator Tubes | 30 |
| Gel and Clot Activator Tubes | 30 |

Centrifugation Reference

| Centrifugation RCF and Time Recommendations | | |
|---|-----------|------------|
| Product | RCF (g) | Time (min) |
| No Additive Tubes | 1500-2200 | 10 |
| Clot Activator Tubes | 1500-2200 | 10 |
| Gel and Clot Activator Tubes | 1800-2200 | 10 |
| Plasma Tubes | 1300-1800 | 10 |
| Plasma Tubes with Gel | 1500-1800 | 10 |
| Citrate Tubes (9NC) | 1500-2000 | 10 |

Cautions and Warnings

Always use appropriate centrifuge rotors or inserts, which should be of the size specific to the tubes used. Make sure the rotor is installed properly, and the rotor load is balanced. The above information about "Clotting Instructions" and "Centrifugation Reference" is for reference only. It is recommended to verify the condition before veterinary use.