

Element HT⁵

Veterinary Hematology Analyzer

EASY TO USE

- Results within 60 seconds including a true 5-part White Blood Cell differential, Red Blood Cell and Platelet parameters, from a 15 μ L sample.
- Large, color touch screen with intuitive navigation simplifies patient data entry and viewing results.
- Simple reagent management via bar-code scanner and on-board menu functions. Internal reagent storage saves space and reduces clutter.
- View numeric results, histograms and scatter plots.

BEST-IN-CLASS TECHNOLOGY

- Laser flow cytometry, impedance counter and colorimetric detection.
- Triple angle laser scatter detects white blood cell volume, complexity and granularity.
- Three discrete measurement channels combine to give you a true 5-part differential.
- Intelligent flagging with Sample Pathology Messaging.

FAST

Results in 60 seconds

ACCURATE

5 part laser and impedance

EASY TO USE

Large color touch screen

PROFITABLE

Low cost per test

Join the conversation about Element HT5
at www.heska.com



800.464.3752
www.heska.com

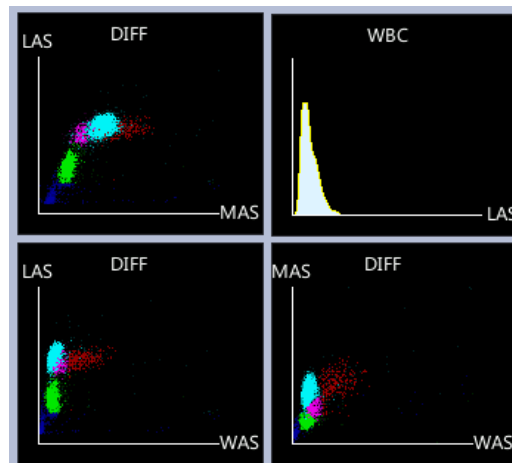


855.SCHEIN1 (724.3461)
henryscheinvet.com

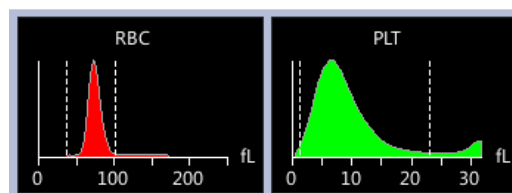
20 TEST PARAMETERS

White Blood Cell	Red Blood Cell
Total White Blood Cell (WBC)	Total Red Blood Cell (RBC)
Neutrophil Number (NEU#)	Hemoglobin (HGB)
Neutrophil Percent (NEU%)	Hematocrit (HCT)
Lymphocyte Number (LYM#)	Mean Cell Volume (MCV)
Lymphocyte Percent (LYM%)	Mean Cell Hemoglobin (MCH)
Monocyte Number (MON#)	Mean Cell Hemoglobin Conc. (MCHC)
Monocyte Percent (MON%)	Red Blood Cell Distribution (RDW-CV)
Eosinophil Number (EOS#)	—
Eosinophil Percent (EOS%)	Platelet
Basophil Number (BAS#)	Total Platelet (PLT)
Basophil Percent (BAS%)	Mean Platelet Volume (MPV)

WBC SCATTER PLOTS & HISTOGRAM



RBC/PLT HISTOGRAMS



RESULTS AND REPORTING

Combine Heska lab results into a consolidated report using the HeskaView Integrated Software® Program or transmit to your Practice Management Software.

- **Easy to Use:** Webstyle links for simple navigation.
- **Simple Data Management:** Rapidly retrieve trending data from patient record.
- **Efficient:** Assign, unassign or delete multiple items at once.



800.464.3752
www.heska.com



800.709.4515
vet.cuattro.com

